



# HeatMaster<sup>TM</sup>

Tough on Winter, Easy on You



**GS** SERIES

**G** SERIES



Ultra High Efficiency Wood Burning Furnaces



# Comfort You Can Count On

## Four Reasons to Choose a HeatMaster<sup>ss</sup> Furnace

We know you want to keep your family comfortable, while you save money. That's why HeatMaster<sup>ss</sup> offers the toughest, easiest-to-use wood burning furnaces on the market.

Here's why you need a HeatMaster<sup>ss</sup>:

### **1** Easy To Use

#### **Less Cleaning and Maintenance**

The EZ Clean Handle makes cleaning the heat exchange tubes a breeze. You don't need to brush tubes or scrape creosote, and you can clean and load your furnace in five minutes!

#### **Stay Clean While Loading**

The Smokeless Loading Handle lets you enjoy clean, easy loading. Just pull the handle before opening the door to stop the smoke from rushing out while you load.

#### **Less Wood Cutting**

Our high efficiency furnaces use up to 50% less wood than conventional furnaces, translating into less time cutting wood, loading wood and cleaning ash.

**Note:** Although most wood burning furnaces are installed outdoors, our G Series models are CSA approved and UL listed for installation in a garage, shop or outbuilding.

We back each furnace with our best-in-industry **Lifetime Limited Warranty, which is twice as long as the leading mild steel competitor.** We are confident that you will enjoy the natural warmth they provide for many years.







### Safe for You

Singular attention is given to safety when designing our furnaces to ensure they will be trouble free.

### Safe for the Environment

Properly burning wood fuels releases the same amount of carbon as decomposing biomatter, making it a carbon-neutral process.

## 2 Built To Last

HeatMaster<sup>ss</sup> combines the best materials with expert engineering to create the most rugged, longest lasting furnaces available. We use 409 Titanium Enhanced Stainless Steel which is the only product that provides the right blend of longevity and cost effectiveness to meet our very high standards of excellence.

**Titanium Stainless Steel** is the best choice for your furnace because:



- **It resists corrosion.** Titanium Stainless steel is coated with a chromium film so it will not corrode from:
  - wet ashes or creosote in your firebox
  - sweating on your water jacket
  - corrosive elements in your water
- **It can withstand higher continuous temperatures.**
- **It transfers more heat.** Heat gets to your water at a higher rate which will save you fuel.
- **It has a low Thermal Expansion Rate.** It won't crack and warp in a high heat environment.

HeatMaster<sup>ss</sup> furnaces are built to the very highest standards with **ISO 9001 Certified** manufacturing processes.

	Mild Steel	409 SS
Corrosion Resistance	No	Yes
Continuous Temperature Tolerance	Low	High
Heat Transfer	Good	Good
Thermal Expansion	Low	Low
Cost	Good	Good

## 3 Eliminate Your Heating Bill

Take control of your budget and eliminate your heating bill with wood heat. Fossil fuel prices fluctuate but wood heat stays inexpensive or free. You'll feel secure when you have complete control of your heating costs. And with a HeatMaster<sup>ss</sup> you'll use less wood than competitors' models because of our clean burning, efficient technology.

Whether you choose to finance your furnace or buy and install it yourself, you'll be pleased with the long term savings wood heating provides.

## 4 The HeatMaster<sup>ss</sup> Advantage

G and GS Series furnaces are built to the highest quality standards but it's good to know that they are backed by the best warranty in the industry. We back each furnace with our **Lifetime Limited Warranty which is twice as long as the leading mild steel competitor.** We also have an extensive network of professional dealers who are there to help you with expert installation, advice and after sales service.

We are confident that your G or GS Series furnace will keep you warm for many winters to come.



# GS SERIES

## Ultra Efficient, Economical Gasification Furnaces

### Industry Leading Efficiency & Emissions

G and GS furnaces exceed government regulations by over 75%.

### Easy Plumbing and Service Access

The insulated, hinged rear door makes it easy to access plumbing and components in the back of the furnace. It can be easily removed if desired.

### EZ Clean Handle

Clean the heat exchange tubes quickly and easily and reduce time for maintenance. No brushing tubes or scraping creosote!

### Traditional Look With A High Quality Finish

### Low Maintenance, High Efficiency Heat Exchange Tubes

Vertical heat exchange tubes keep ash and creosote from collecting and blocking the tube. The spiral turbulators create very efficient heat transfer and also make the tubes easy to clean.

### High R Value Multi-layer Insulation

Foil-backed batt insulation won't trap moisture, and creates an air gap for a higher R value. Heat can't escape because there aren't any seams. It's like wrapping your furnace in a blanket.

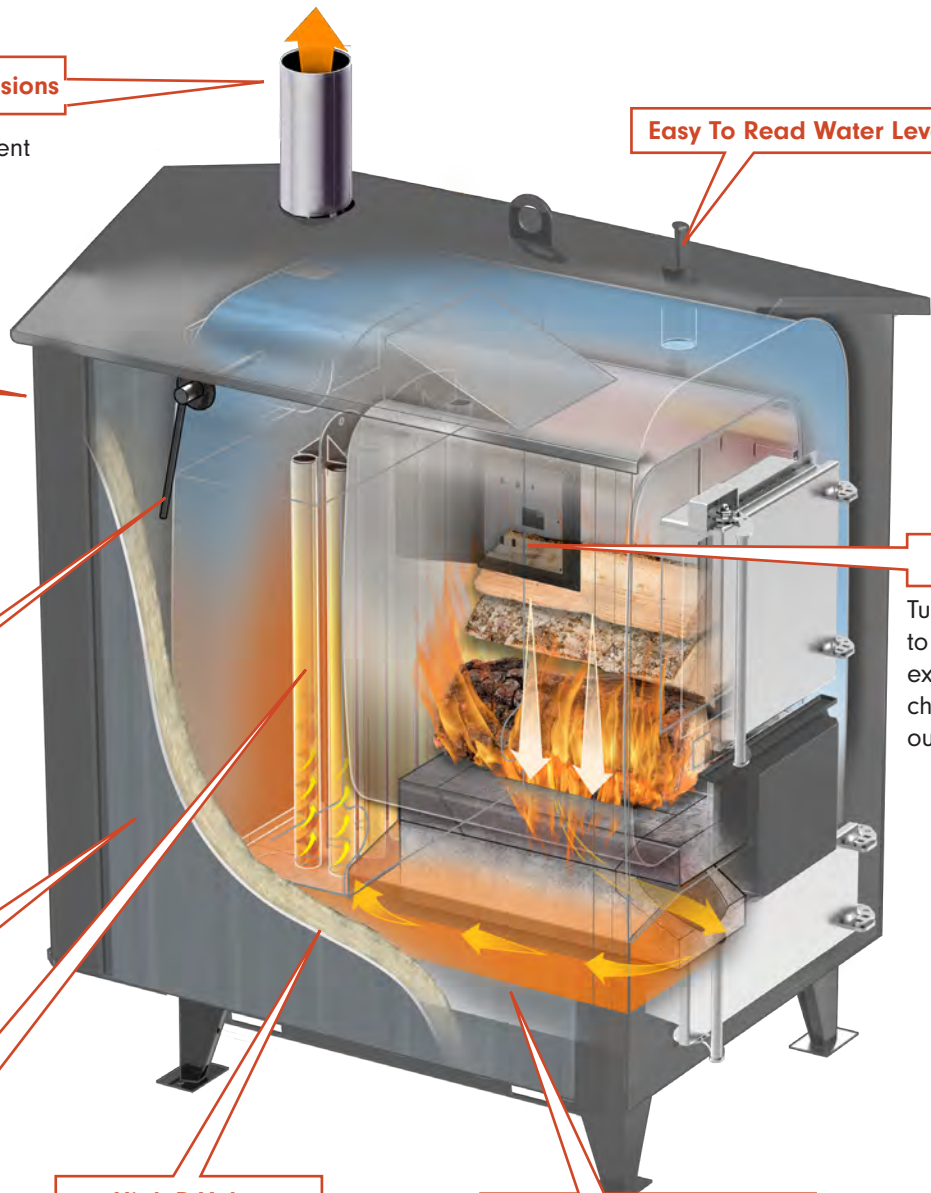
### High Efficiency Combustion Chamber Design

The horseshoe refractory design creates turbulence and reflects heat back to the fire to create the cleanest, hottest burn (up to 2000° F). The water jacket surrounds the chamber to transfer heat at the hottest point.

### Easy To Read Water Level Gauge

### Loading Switch

Turns on the fan to help vent the exhaust out the chimney and not out the door.



# GS SERIES



	GS100	GS200	GS400
Approx. Heating Space*	3,000 sq. ft.	5,000 sq. ft.	8,000 sq. ft.
Maximum BTU's**	120,000/hr	232,000/hr	340,000/hr
8 Hour Burn Rate	48,000 BTU/hr	112,000 BTU/hr	180,000 BTU/hr
Water Capacity	90 gallons	195 gallons	260 gallons
Firebox (W" x L" x H")	19 x 20 x 30	28 x 30 x 36	30 x 42 x 40
Firebox Door (W"x H")	16 x 16	20 x 20	20 x 20
Weight	1,086 lbs	1,802 lbs	2,420 lbs
Outlets	1 set of 1" feed and return (can be teed)	2 sets of 1" feeds and returns	2 sets of 1.5" feeds and returns
Chimney Size	6"	6"	8"
Dimensions*** (W" x L" x H")	38 x 57 x 78	51 x 71 x 88	51 x 85 x 91

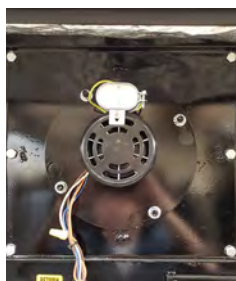
\*Well-insulated house. \*\*BTU's are approximate and will vary widely depending on fuel quality. \*\*\*Height of the furnace is to the top of the lift hook.

## More Great Features Developed with You in Mind.



### Rounded Firebox

The rounded design gives the firebox more strength with fewer welds.



### Draft Induction Fan

Draws air through the furnace to maintain gasification while keeping airways clean.



### Safety Door Latch

Latch catches the door so it doesn't swing open and expose you to excessive heat.



### Control Panel

Uses smart programming for an efficient burn while minimizing start up and shut down cycles. The covered panel protects controls from the elements and it's back-lit for easy reading at night.





# What our Customers Say

"We are in NH with 20+" of snow right now with temps in the low 20's and my house is 72 and its just sitting out there not even breaking a sweat doing its job. Went from a leading competitor to HeatMaster<sup>ss</sup> and would recommend them to anybody!"

**Neal B, New Hampshire**

"Just wanted to say that I bought a HeatMaster<sup>ss</sup> and love it. Did a lot of research and decided to go with HeatMaster<sup>ss</sup>. The dealer I had knew a lot about the stoves and helped me out a lot. Thanks again for selling a great stove."

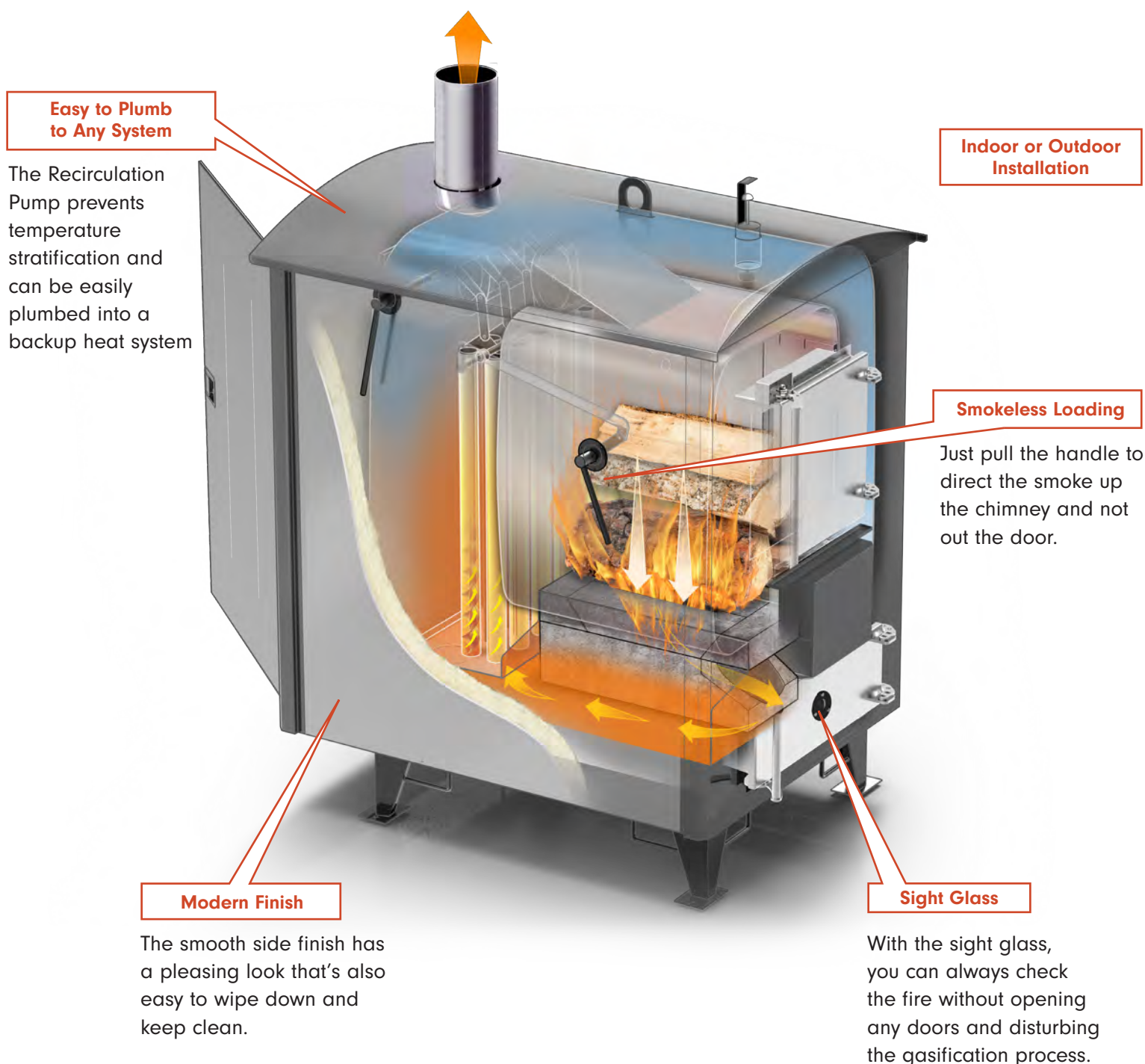
**Ryan E, Virginia**





# G SERIES

## Everything you get with the GS Model...PLUS these convenient features



**Upgrade to the G Series for as little as \$40 per year!**

Ask your dealer for details.

# G SERIES



	G100	G200	G400
Approx. Heating Space*	3,000 sq. ft.	5,000 sq. ft.	8,000 sq. ft.
Maximum BTU's**	120,000/hr	232,000/hr	340,000/hr
8 Hour Burn Rate	48,000 BTU/hr	112,000 BTU/hr	180,000 BTU/hr
Water Capacity	90 gallons	195 gallons	260 gallons
Firebox (W" x L" x H")	19 x 20 x 30	28 x 30 x 36	30 x 42 x 40
Firebox Door (W"x H")	16 x 16	20 x 20	20 x 20
Weight	1,200	1,900 lbs	2,650 lbs
Outlets	1 set of 1" feed and return (can be teed)	2 sets of 1" feeds and returns	2 sets of 1.5" feeds and returns
Chimney Size	6"	6"	8"
Dimensions*** (W" x L" x H")	38 x 57 x 78	51 x 74 x 85	57 x 85 x 91

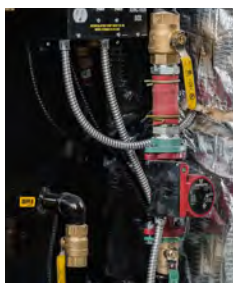
\*Well-insulated house. \*\*BTU's are approximate and will vary depending on fuel quality. \*\*\*Height of the furnace is to the top of the lift hook.

## More Great Features Developed with You in Mind



### Indoor & Outdoor Installation

U.L. and CSA approval for indoor installation allows you to comfortably load your furnace indoors and out of the elements.



### Recirculation Pump

Eliminates temperature stratification and the flexible joint makes it simple to install or change pumps. It also easily adapts to an external backup heat source.

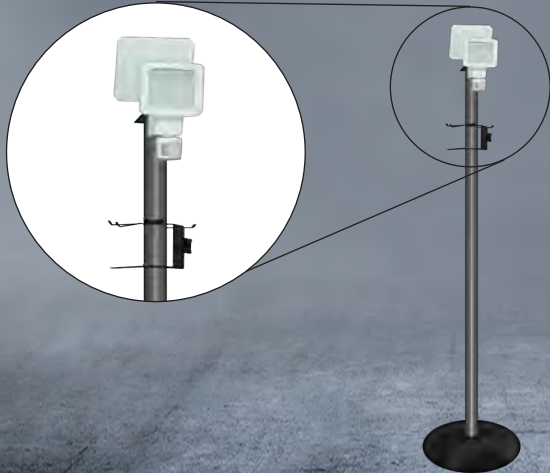


### Easy Access to Heat Exchange Tubes

The Fan Assembly plate is quickly and easily removed to allow wide open access for inspections and cleaning.



# CONVENIENT ACCESSORIES



## Brite-Nite Tool Stand

- **Lighten Your Loading**  
The high lumens LED light with solar panel can be aimed directly into your firebox making loading safe and easy. (Light and Pole sold separately).
- **Never Search for Tools Again**  
Hang up to three tools off the ground and out of the way.
- **High Quality Long Lasting Design**  
Corrosion resistant stainless steel pipe and sturdy metal base.
- **Indoor and Outdoor Application**  
The solar panel can be installed outdoors and the 20' cable will easily reach your indoor installation.

## EZ-GO Ash Cart

- **Eliminate the Mess**  
Your ash cart fits securely under the ash door so your ashes fall into the cart and not on the ground.
- **No More Heavy Lifting**  
Weather resistant solid tires easily roll over rough terrain and slide over snow as you transfer your ash to your disposal site. The cart easily tips to dump the ash.
- **Safety Comes First**  
The stainless steel cart safely stores your ash and reduces the risk of an accidental fire.

## What our Customers Say

"The HeatMaster<sup>ss</sup> has changed things for my family. I am now saving at least \$2300 in heating bills each year, and in an average year I burn 11-12 cords of wood. I definitely recommend this product to anyone looking to change to wood burning as a heating option. I now know it's a great furnace, but I also know that HeatMaster<sup>ss</sup> will stand behind their products".

**Dan P, Manitoba**



# Heat where you need it

In addition to supplying domestic heat and hot water, a HeatMaster<sup>ss</sup> furnace can also provide heat for:

Baseboard heaters



Hot tubs and pools



Livestock structures such as dairy and hog barns



Pressure washers



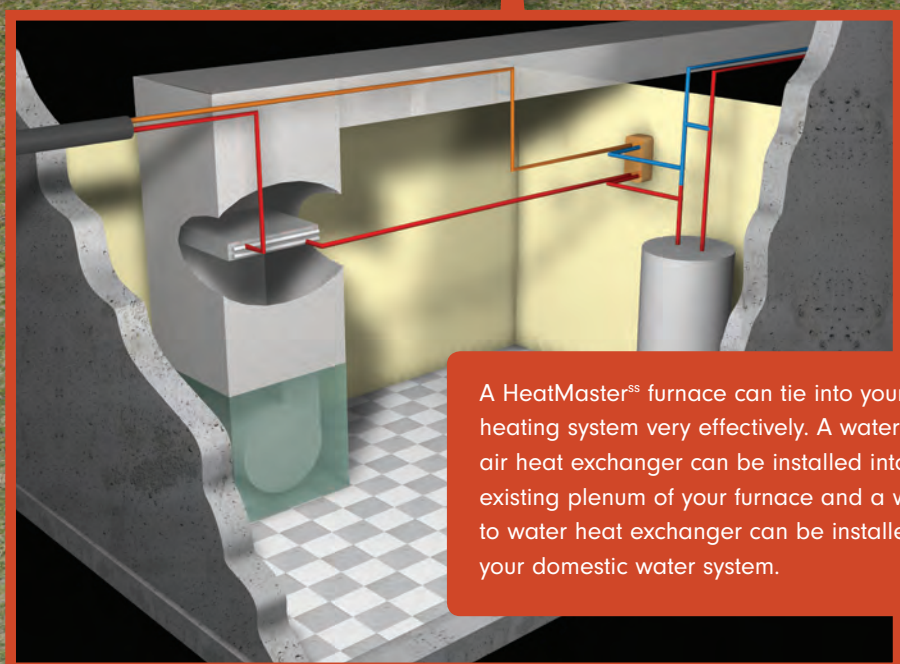
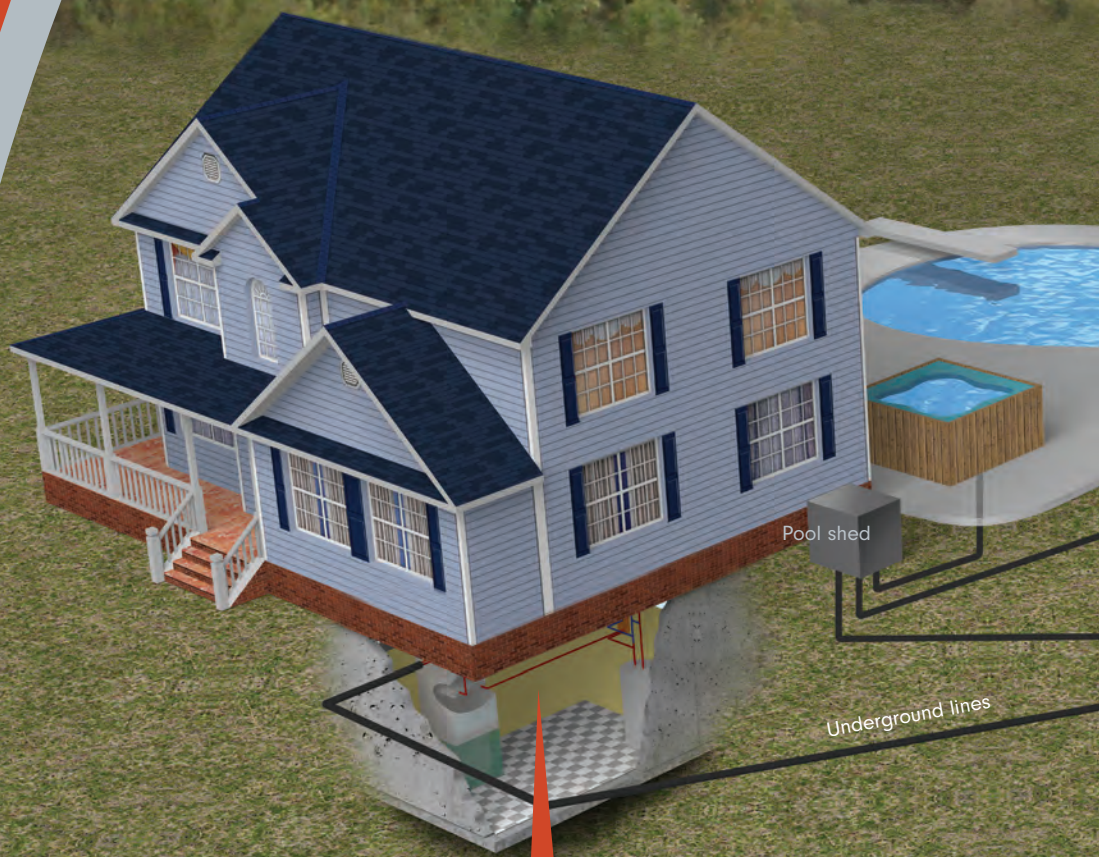
Snow-melt for driveways



Clothes dryers



And almost any heating application you can imagine.



A HeatMaster<sup>ss</sup> furnace can tie into your home heating system very effectively. A water to air heat exchanger can be installed into the existing plenum of your furnace and a water to water heat exchanger can be installed in your domestic water system.

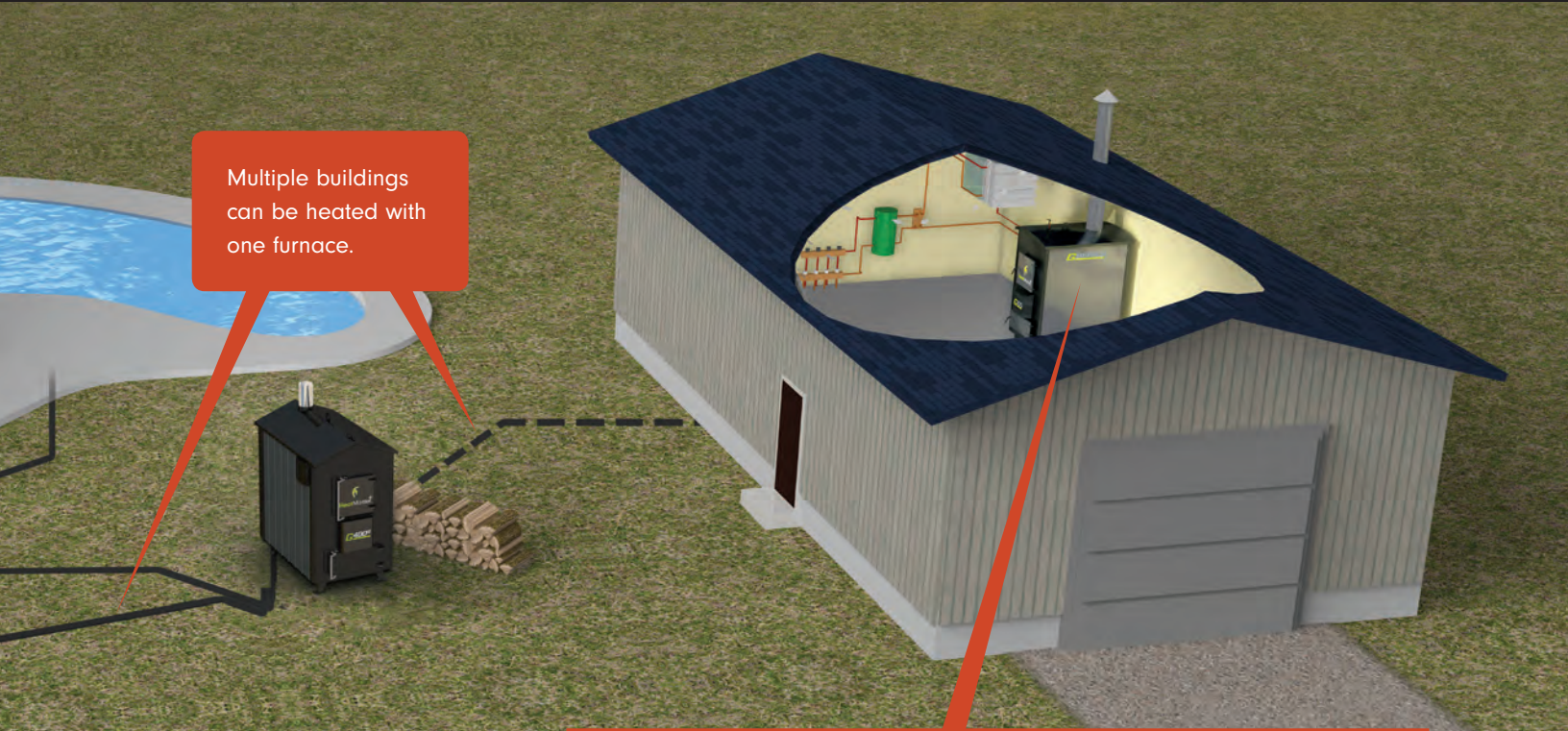


## Indoors and Out


G Series furnaces carry the necessary safety features to be installed indoors or outdoors. This gives you the option to select the ideal location in your garage or shop, or in your yard to make loading convenient.

## Flexibility

Your HeatMaster<sup>SS</sup> furnace can easily tie in to almost any existing heating system. Then use your existing heat source as a backup.



Multiple buildings can be heated with one furnace.



The HeatMaster<sup>SS</sup> system is perfect for garages, shops and other outbuildings. It will power an overhead forced air heating unit or if you prefer, an in-floor heating system.



Use a high quality insulated underground pipe to bring the hot furnace water to your building.







HeatMaster<sup>ss</sup> is a family-owned company which has manufactured and distributed it's own line of outdoor furnaces since 2001. Our dedicated staff have many years of knowledge and experience and we continually research new and innovative ways to improve our products.

HeatMaster<sup>ss</sup> offers prompt delivery, expert installation, and the highest standard of after-sales service. We thoroughly inspect and test every furnace before it leaves our plant.

After consulting with one of our dealers, you'll be able to choose the right furnace to meet your needs.

To find a dealer in your area, visit

**[heatmasterss.com](http://heatmasterss.com)**

HeatMaster<sup>ss</sup> Head Office  
Phone: (204) 325-9792  
Toll Free: 1-877-325-9792  
Email: [info@heatmasterss.com](mailto:info@heatmasterss.com)

